

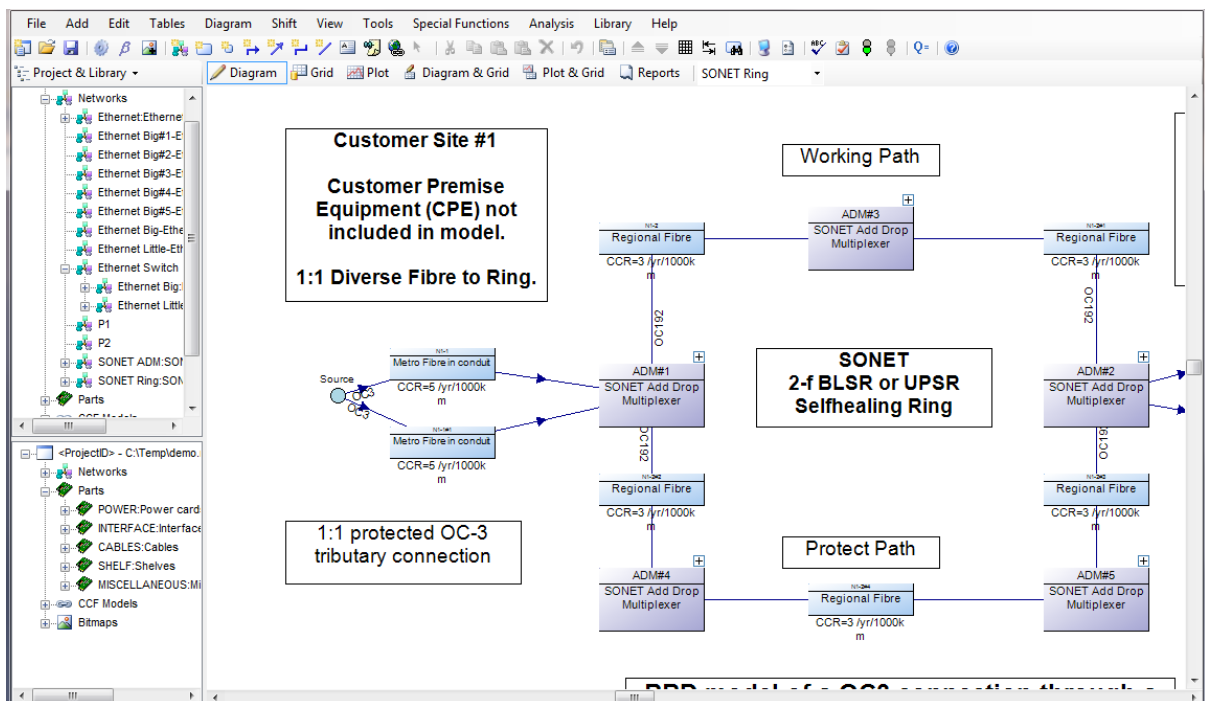
What's New in NAP 2

64-bit Application

NAP 2 runs as a 64-bit application allowing larger models to be analyzed than in previous 32-bit versions. The efficient analysis of large networks requires significant amounts of memory for the computation of paths through the network and the determination of the minimal cut sets required for availability prediction.

Developed in the Microsoft .Net Framework

NAP 2 provides the look and feel of a modern Windows client application rich in user interface features designed to reduce the time required to produce and analyze network models.



Improved Analysis Performance

Average SONET computing times for analyzing large networks have been substantially reduced through the development of more efficient path generation algorithms.

Alternative Combinatorial Analysis methods

NAP 2 provides an alternative combinatorial cut set evaluation method to analyze large networks where availability is dominated by lower order combinations of network element failures.

Enterprise Version

The Isograph Enterprise System provides the framework for controlling multi-user project and library access through a central database system. Access rights to projects, libraries and administrative functions are controlled through user permissions. This allows an organization to:

- Assign administrators to organize access rights to groups of users
- Build a centralized hierarchy to organize projects and libraries
- Restrict access to projects and libraries where necessary
- Control the check-in and check-out of projects for modification
- Track the current projects that are checked-out to users
- Provide version control of projects and libraries

Enhanced Library Facilities

Users may now attach multiple libraries when editing the current NAP project. Network elements, parts and CCF models may be easily transferred to the current project tree or diagram using drag and drop facilities.

Enhanced Grid View

The new grid view allows access to data tables making up a NAP project. Users may now construct their own custom grid layouts using filter and sort facilities and take advantage of the extensive Find and Replace functionality.

Report Designer

The Report Designer has been enhanced and extended to provide export and publishing facilities in Word and PDF format. Wizards are provided for report creation

Import/Export

Import and export facilities have been improved to include the latest versions of Excel and Access. SQL Server import and export is now possible.

Diagram Notes and Hyperlinks

Notes and hyperlinks may now be added directly to the network diagram. Note text and hyperlinks may be displayed by hovering the mouse cursor over the appropriate symbol in the diagram.

Spelling Checker

The new spelling checker allow users to check selected tables or the entire project for spelling errors.

Plugins

If you are licensed to use the new Plugins facility you will be able to create programmable plugins that read, analyze and modify data from the current NAP project. Plugins may be used to create specialized reports, perform specialized operations or conversions, modify project data and call external libraries or processes. A plugin may be exported for use by other users.

API

A new and rich API (Application Programming Interface) has been added allowing .Net programmers to quickly build interfaces to other applications. All the standard project tables may now be accessed through the Dynamic Link Library (DLL) facility. The Reliability Workbench DLL enables users to seamlessly link their databases or external applications to Reliability Workbench projects. For example, the DLL may be used to create a custom link between a database for importing parts data into a NAP project. In summary, the DLL allows programmers to directly access project data without using the NAP application interface.

The NAP DLL is a .NET assembly that runs under the Microsoft .NET Framework Version 4.0. No separate installation is necessary to access the DLL. The DLL is part of the NetworkAvailabilityPrediction.exe file. You will, however, require a DLL license to access the main functionality of the DLL.